

## Side Clamps with Eccentric Cam Lever

### SPECIFICATION

#### Types

- Type **E**: With serrated clamping jaw
- Type **P**: With prism clamping jaw

#### Coding

- **R**: Clamping by clockwise rotation
- **L**: Clamping by anti-clockwise rotation

Clamping mechanisms  
Steel

- Case-hardened
- Blackened

Ball knob DIN 319 (see page 538)

Plastic, Duroplast

Black, shiny finish

For slot width  $a = 10 / 14$

- Nuts for T-slots DIN 508 (see page 977)

- Socket cap screw DIN 912  
Steel, blackened

For slot width  $a = 12$

- T-slot bolts DIN 787 (see page 986)

- Hex nut DIN 934  
Steel, blackened

### INFORMATION

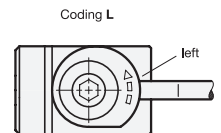
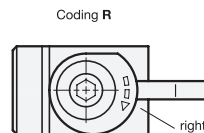
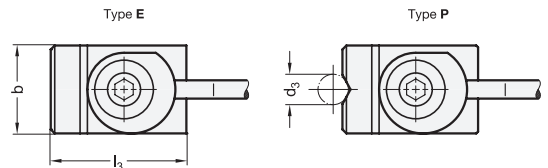
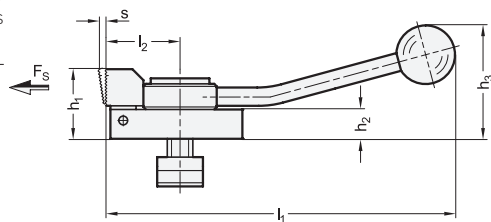
With side clamps GN 9190, workpieces are clamped with a pivoted clamping jaw. The clamping force acts laterally and from above to pull down on the workpiece and clamp it against fixed stops and the supporting surface.

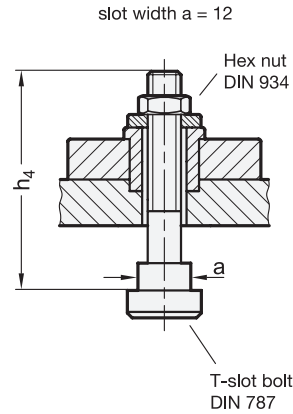
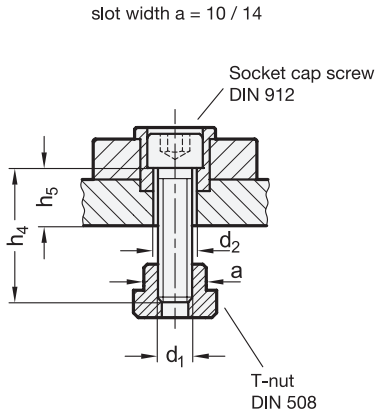
The clamping stroke of the clamping jaw results from the swivel movement of the eccentric cam lever. When the lever is released, the clamping jaw is returned by spring force. The low overall height of the side clamps allow full-surface machining of the workpiece.

Side clamps can be screwed in directly, e.g. in a mounting plate, or fastened to machine tables with T-slots. In addition, they can be mounted in any position perpendicular to the T-slot using the slotted support blocks GN 9190.3 (see page ), which are available as accessory.

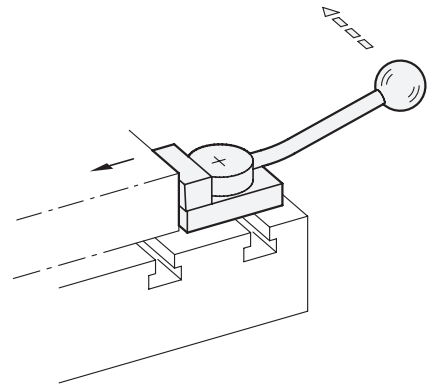
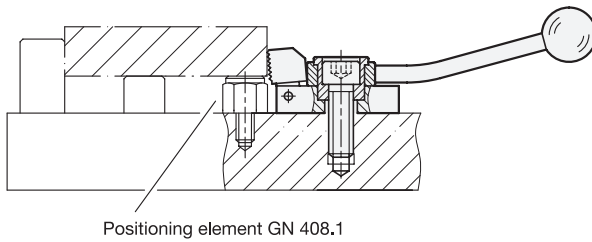
### ACCESSORY

- Slotted Support Blocks GN 9190.3 (see page )





Examples of application



GN 9190-E

Description	a Slot width	d1	F <sub>s</sub> in kN	b	d2	h1	h2	h3	h4	h5	l1	l2	l3	s Clamping stroke	⚖️
GN 9190-10-M8-E-R	10	M 8	3.5	32	8.4	20	8	40	30	12.6	132	32	50	3	262
GN 9190-10-M8-E-L	10	M 8	3.5	32	8.4	20	8	40	30	12.6	132	32	50	3	262
GN 9190-12-M12-E-R	12	M 12	7	48	12.5	38	16	62	63	-	190	40	72	4	870
GN 9190-12-M12-E-L	12	M 12	7	48	12.5	38	16	62	63	-	190	40	72	4	870
GN 9190-14-M12-E-R	14	M 12	7	48	12.5	38	16	62	40	19.1	190	40	72	4	845
GN 9190-14-M12-E-L	14	M 12	7	48	12.5	38	16	62	40	19.1	190	40	72	4	845

GN 9190-P

Description	a Slot width	d1	F <sub>s</sub> in kN	b	d2	d3 Min.	d3 Max.	h1	h2	h3	h4	h5	l1	l2	l3	s Clamping stroke	⚖️
GN 9190-10-M8-P-R	10	M 8	3.5	32	8.4	4	26	20	8	40	30	12.6	132	32	50	3	263
GN 9190-10-M8-P-L	10	M 8	3.5	32	8.4	4	26	20	8	40	30	12.6	132	32	50	3	263
GN 9190-12-M12-P-R	12	M 12	7	48	12.5	4	26	38	16	62	63	-	190	40	72	4	893
GN 9190-12-M12-P-L	12	M 12	7	48	12.5	4	26	38	16	62	63	-	190	40	72	4	893
GN 9190-14-M12-P-R	14	M 12	7	48	12.5	4	26	38	16	62	40	19.1	190	40	72	4	838
GN 9190-14-M12-P-L	14	M 12	7	48	12.5	4	26	38	16	62	40	19.1	190	40	72	4	838

